

MULTI-OUTLET EXTENSIONS FOR OFFICES

A FEW CLEVER
IDEAS
A TOUCH OF
ELEGANCE



Cable guide



Integral cable storage



Multi-outlet extensions on request

please consult us

NEW

multi-outlet extensions
without cord - German standard



532 64



532 62

Conform to IEC 884-1
Aluminium extensions
connection of high-currents to terminal block :
3 680 W at 230 V per circuit
Screw mounting possible
Supplied with 2 cable-guide accessories

- | Pack | Cat.Nos | | |
|------|---------------|--|--|
| 1 | 532 03 | 1 low-current circuit Composition : 3 x RJ 45 sockets category 6 FTP Dimensions : 294 x 77 x 46 mm | |
| 1 | 532 04 | Composition : 4 x RJ 45 sockets category 6 FTP Dimensions : 362 x 77 x 46 mm | |
| 1 | 532 61 | 1 tamperproof circuit Composition : 6 x 2 P + \perp tamperproof Dimensions : 474 x 77 x 46 mm | |
| 1 | 532 64 | 2 circuits (standard + tamperproof) Composition : 3 x 2 P + \perp standard 3 x 2 P + \perp tamperproof Dimensions : 474 x 77 x 46 mm | |
| 1 | 532 60 | 1 low-current circuit and 1 high-current circuit Composition : 4 x 2 P + \perp standard 2 x RJ 45 sockets category 6 8 contacts UTP Dimensions : 474 x 77 x 46 mm | |
| 1 | 532 62 | 2 high-current (standard and tamperproof) and low-current circuits Composition : 2 x 2 P + \perp standard 2 x 2 P + \perp tamperproof 2 x RJ 45 sockets category 6 8 contacts UTP Dimensions : 474 x 77 x 46 mm | |
| 1 | 532 63 | Composition : 2 x 2 P + \perp standard 2 x 2 P + \perp tamperproof 3 x RJ 45 sockets category 6 8 contacts UTP Dimensions : 519 x 77 x 46 mm | |
| 5 | 532 09 | Cable-guide accessory For cable holding and management To be glued, screwed or clipped on the full range Supplied per 5 | |

NEW

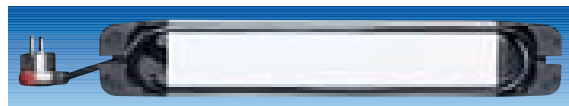
multi-outlet extensions without cord - German standard



532 66



532 69



Aluminium casing with cable


Conform to IEC 884-1
Aluminium multi-outlet extensions
2 P + \perp 16 A - 250 V \sim sockets fitted
with shutters for child protection
Maximum admissible power : 3 680 W at 230 V \sim
2 m cord (3 x 1.5 mm²) supplied with ring plug with
earth for easy disconnection. Cable storage facility
to wind up part of the cord. Screw mounting possible

| Pack | Cat.Nos | Multi-outlet extensions |
|------|---------|---------------------------------------|
| 1 | 532 65 | 4 x 2 P + \perp 384 x 77 x 46 mm |
| 1 | 532 67 | 4 x 2 P + \perp 384 x 77 x 46 mm |
| 1 | 532 66 | 6 x 2 P + \perp 474 x 77 x 46 mm |
| 1 | 532 68 | 6 x 2 P + \perp 474 x 77 x 46 mm |

Multi-outlet extensions with protection and indicator switch

| | | |
|---|--------|--|
| 1 | 532 69 | 5 x 2 P + \perp Protection with 16 A double pole MCBs Dimensions : 587 x 77 x 84 mm |
| 1 | 532 70 | 5 x 2 P + \perp Protection with 1 single pole + neutral 16 A 30 mA RCBO Dimensions : 587 x 77 x 84 mm |

Cable-guide accessory

| | | |
|---|--------|--|
| 1 | 532 09 |  For cable holding and management to be glued, screwed or clipped on the full range. Supplied per 5 |
|---|--------|--|

Tamperproof insert for socket (p. 483)



**If you wish multi-outlet
extensions as per your
specifications**

please consult us

multi-outlet extensions voltage surge protector and interference filter

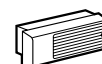


533 31

New design

Aluminium multi-outlet extension with cable storage
Supplied with 2 cable guide accessories
and 2 m cable (3 x 1.5 mm²) fitted with an earthed
plug with ring for easy unplugging
Especially suitable for protecting computers
and electronic devices
Fitted with a surge protection module that can be
withdrawn for immediate maintenance
Protection in common and residual current mode
(EE-EN-IE connection systems)
Nominal discharge current :
20 shocks at 1.5 kA (wave 8 x 20 μ w)
Maximum acceptable current :
1 shock at 3 kA (wave 8 x 20 μ w)
Protection level:
1 kV across P and N
1.2 kV across P, N and E
Leakage current under : UC < 1 mA
Follow current (Is) : zero
Screw mounting possible

| Pack | Cat.Nos | Surge voltage protector unit and interference filter |
|------|---------|--|
| 1 | 533 31 | German standard 5 sockets protected and controlled by a switch with indicator 10 A - 250 V \sim - 50/60 Hz Dimensions : 654 x 77 x 61 mm |
| 1 | 533 33 | Spare surge protector module for unit Cat.No. 533 31 Simple push-in replace |



switch-line unit for local area networking



532 16

Aluminium switch-line unit
Supplied with 2 cable guide accessories
For local area networking of peripheral devices :
PC, printer, scanner, etc
Can be connected to the main network or to on other
stackable network unit via a side-mounting
RJ 45 sockets
Units equipped with :
• 6 x 2 + \perp - 16 A - 250 V \sim
• 1 Mosaic network socket outlet fitted with 6 RJ 45
ethernet type 10/100 base T
(data interchange rate : 10 mbps)
• 2 m cable (3 x 1.5 mm²) fitted with a plug with ring
for easy unplugging
• function indicator lights (voltage, traffic, collision)

| Pack | Cat.Nos | German standard |
|------|---------|---|
| 1 | 532 18 | Dimensions : 632 x 77 x 66 mm |
| 1 | 532 16 | French standard Dimensions : 609 x 77 x 66 mm |

NEW

pre-wired assemblies
for DLP adaptable trunking, with 85 mm cover



109 19



109 69

Used for fast trunking equipment of sockets and protection
Installation in 50 x 105/150, 65 x 150/195 trunking with 85 mm cover
Connection on the remote terminal German standard
Length : 577 mm

| Pack | Cat.Nos | German standard |
|------|---------|---|
| 1 | 109 19 | With 2 circuits Composition : • 4 x 2 P + \pm 16 A • 2 x 2 P + \pm 16 A tamperproof |
| 1 | 109 29 | Composition : • 3 x 2 P + \pm 16 A • 3 x 2 P + \pm 16 A tamperproof |
| 1 | 109 39 | With 1 protected circuit Composition : • 4 x 2 P + \pm 16 A • 1 double pole 16 A MCBs |
| 1 | 109 49 | Composition : • 4 x 2 P + \pm 16 A • 1 single pole + neutral 16 A 30 mA RCBO |
| 1 | 109 69 | With 2 circuits high-current (standard + tamperproof) and low-current Composition : • 2 x 2 P + \pm 16 A • 2 x 2 P + \pm 16 A tamperproof • \pm RJ 45 sockets category 6 (8 contacts UTP) |
| 1 | 109 79 | Composition : • 2 x 2 P + \pm 16 A • 2 x 2 P + \pm 16 A tamperproof • Space of 5 modules of 22.5 mm each for low-current |

Cat.Nos 306 08/28/48, 306 07/27/47 and 306 09/29/49 to complete work, available on request, in the limit of stock



Other versions or adaptations

please consult us

pre-wired assemblies
connection and mounting

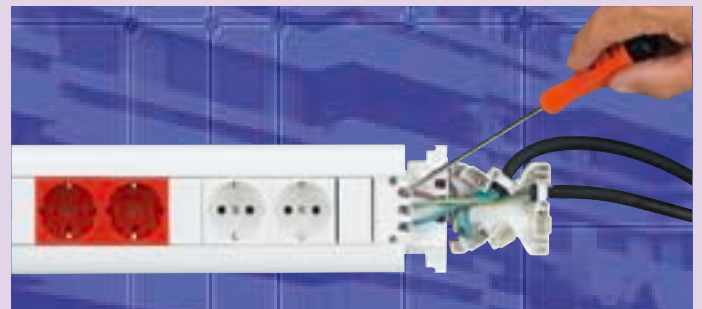
Example : installation in 50 x 105 trunking (Cat.No 104 22) with cover 85 mm (Cat.No 105 02)

1



2

Low voltage wiring



Extra-low voltage wiring



Quick and easy connection

3

Clip together



Put the covers on



Fix the cover plates



NEW

desktop multi-outlet extensions to be equipped



535 90



535 91



535 99



535 97

Aluminium extensions with cable guide (reversible)
To be equipped with Mosaic sockets

| Pack | Cat.Nos | Empty aluminium extensions |
|------|---------|-------------------------------------|
| 1 | 535 90 | 8 modules |
| 1 | 535 91 | 12 modules |
| 1 | 535 92 | 16 modules |
| 5 | 535 99 | Fixing accessory to clip on desktop |

| Pack | Cat.Nos | Cable worm |
|------|---------|---|
| 1 | 535 97 | Very suitable solution for a safe and design protection of the cabling between desk and floor 2 compartments Length: 770 mm Ø70 mm Translucid |

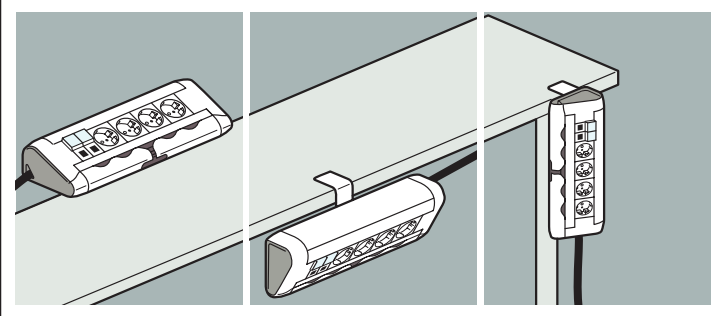
MULTI-OUTLET EXTENSIONS FOR OFFICES

An attractive appearance!

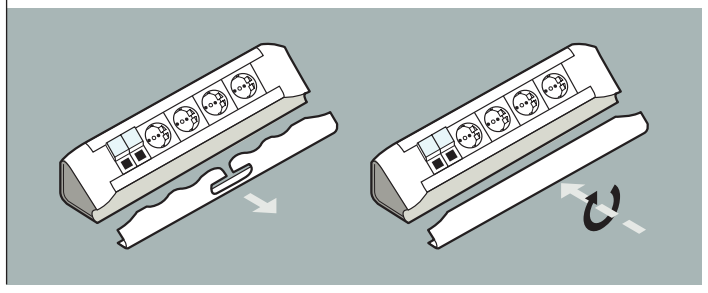
Legrand decorates your offices. Design, attractive appearance and ease of use to meet the needs of workstation flexibility and mobile working



> Multi-position fixing device



> Reversible cord storage device



Red catalogue numbers: New products

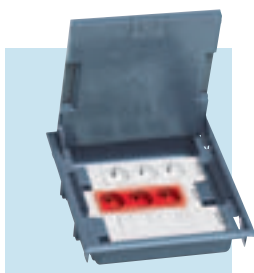


floor units and floor sockets

Wiring accessories that can be mounted on all supports



DLP trunking (p. 702 to 737)



Floor boxes (p. 742-743)



Floor units (p. 748)



Desktop multi-outlet extensions (p. 747)

CHOICE OF FUNCTIONS



Socket outlets

- > German standard (p. 625)
- > British standard (p. 624)
- > other standard (p. 625, 626)



Data sockets

- > Cat. 5e (p. 792)
- > Cat. 6 (p. 792)
- > for fibre optic (p. 805)



Telephone sockets (p. 629)



TV sockets (p. 632)



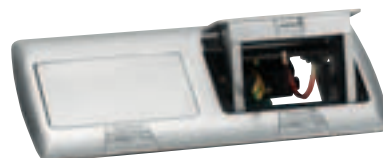
317 48



317 49
Equipped with sockets, to be ordered separately



6503 00



6503 49



6503 90

| Pack | Cat.Nos | Floor units |
|------|---------|---|
| | | For fitting electrical wiring accessories on the floor Equipped with pivoting wiring supports for easy installation of sockets For Mosaic screw connection sockets (see p. 624) Can be installed on floor, combined with floor duct Cat.No 328 00 Can be illuminated with LED Cat.No 899 06 |
| 5 | 317 48 | 2 x 4 self assembly modules |
| 5 | 317 49 | 3 x 4 self assembly modules |
| 10 | 899 06 | LED to be wired, 230 V High luminescence orange neon |

| Pack | Cat.Nos | Floor sockets |
|------|---------|--|
| | | Empty receptacles for floor sockets |
| 1 | 6503 00 | Aluminium - 3 modules |
| 1 | 6503 50 | Brass - 3 modules |
| 1 | 6503 49 | Aluminium - 2 x 3 modules |
| | | Flush-mounting boxes for floor sockets |
| 1 | 6503 90 | Plastic - 3 modules |
| 10 | 6503 31 | Flush-mounting box for floor box Cat.No 6503 49, plastic (2 x 3 modules) |
| 1 | 6503 32 | Metallic - 3 modules (can be assembled with another Cat.No 6053 32 to compose a 2 x 3 modules box) |
| | | Accessory for floor access unit |
| 5 | 6503 94 | Blanking mounting plate |