

multi-entry plastic cable gland IP 66

NEW

plastic cable glands IP 68 ISO and PG



Example of using a 980 50 multi-entry cable gland



980 50



980 57



980 60



980 05



980 25



980 26



980 47



Technical characteristics (p. 296)

Pack	Cat. No.	RAL 7001 grey cable gland			
		Multi-entry cable gland for temporary or permanent feedthrough of one or more cables without dismantling, or one or more cords after dismantling the seal only Mechanical anti-vibration clamping with neoprene seal for IP 66 weatherproofing Locking part consists of flexible blades exerting a strong pressure on the cable, giving the product excellent tensile strength Supplied with blanking plates fitted for unused entries O-ring joint and hex. nut fitted Polyamide			
		Thread	Clamping capacity (mm) Ø Min. Ø Max.		For cords with standard plug
10	980 49	ISO 25	3 x Ø3.5	3 x Ø6.5	RJ 45 on UTP cable
5	980 50	ISO 32	4 x Ø6.5	4 x Ø9.5	RJ 45 all cables
3	980 51	ISO 40	4 x Ø9.5	4 x Ø12.5	RJ 45 all CEE 22 cables

Pack	Cat. No.	Multi-cable and cord seals			
		Convert an IP 68 plastic cable gland to an IP 66 cable gland for multiple cables and cords Fitted in place of the sealing ring Supplied with blanking plates for unused entries Neoprene			
		For fitting in c. gland	Clamping capacity (mm) Ø Min. Ø Max.		For cords with standard plug
25	980 55	ISO 20 or PG 13.5	3 x Ø2	3 x Ø3.5	
25	980 56	ISO 25 or PG 21	3 x Ø3.5	3 x Ø6.5	RJ 45 on UTP cable
25	980 57	ISO 32 or PG 29	4 x Ø6.5	4 x Ø9.5	RJ 45 all cables
10	980 58	ISO 40 or PG 36	4 x Ø9.5	4 x Ø12.5	RJ 45 all CEE 22 cables
5	980 60	ISO 63 or PG 48	2 x Ø2 2 x Ø3.5 3 x Ø6.5	2 x Ø3.5 2 x Ø6.5 3 x Ø9.5	RJ 45 all 2P+E cables

Pack	Cat. No.	ASI joint	
25	980 54	Converts an IP 68 plastic cable gland to an IP 66 cable gland for ASI cable Fitted in place of the sealing ring For fitting in ISO 20 or PG 13.5 cable gland Neoprene	



Technical characteristics (p. 296)
Agreements (p. 906)

Anti-vibration mechanically tightened cable gland with neoprene weatherproof seal for IP 68 protection
Locking part consisting of flexible blades which exert strong pressure on the cable thus giving the product excellent tensile strength
Supplied with surface seal and locking nut mounted
Polyamide

Grey RAL 7001 cable glands

Pack	Cat. Nos	ISO		
		Conform to EN 50 262		
		ISO	Clamping capacity (mm) Min. Max.	
25	980 00	12	3	6.5
25	980 01	16	4	8
25	980 03	20	6	12
10	980 05	25	12	18
5	980 06	32	18	25
3	980 07	40	22	32
2	980 08	50	30	38
2	980 09	63	34	44

Pack	Cat. Nos	PG		
		Conform to guide recommendation UTE C 68-300 and 68-311		
		PG	Clamping capacity (mm) Min. Max.	
25	980 20	7	3	6.5
25	980 21	9	4	8
25	980 22	11	5	10
25	980 23	13.5	6	12
20	980 24	16	10	14
10	980 25	21	12	18
5	980 26	29	18	25
3	980 27	36	22	32
2	980 28	42	30	38
2	980 29	48	34	44

Locking nuts

Pack	Cat. Nos	Black RAL 9011	
		Hexagonal with base for protecting the enclosure surface when tightening Polyamide reinforced fiber glass	
		ISO	
50	979 41	16	
50	979 43	20	

Grey RAL 7001 stopping plugs - ISO

Pack	Cat. Nos	Grey RAL 7001 stopping plugs - ISO	
		Hexagonal plug with gasket and equipped with skirt for protecting the surface of the enclosure when fitting Tighten using Allen key, flat screwdriver	
50	980 41	16	
50	980 43	20	
50	980 45	25	
25	980 46	32	
25	980 47	40	

plastic cable glands IP 55

ISO and PG



979 33



980 16



980 66



955 71



955 52



955 76



957 06



Technical characteristics (p. 297)

Pack	Cat.Nos	Grey RAL 7035 cable glands		
		Compact with clamping cap with knock-out opening can be blanked with plug polyamide, rubber seal		
		ISO		
		Conform to EN 50 262		
			Clamping capacity (mm)	
		ISO	Min.	Max.
50	979 31	16	6	9
50	979 33	20	9	12
50	979 34	20	11	14
		PG		
		Conform to guide recommendation UTE C 68-300 and 68-312		
		PG	Clamping capacity (mm)	
			Min.	Max.
50	980 10	7	3	6
50	980 11	9	5	8
50	980 12	11	7	10
50	980 13	13	9	12
50	980 14	16	10	14
50	980 15	21	14	18
10	980 16	29	16	24
10	980 17	36	22	30
10	980 18	42	30	35
10	980 19	48	31	40

Pack	Cat.Nos	Locking nuts		
		Black RAL 9011 - ISO		
		Hexagonal with base for protecting the enclosure surface when tightening Polyamide reinforced glass fiber		
		ISO		
50	979 41	16		
50	979 43	20		
		Grey RAL 7035 - PG		
		12 side nuts - Polycarbonate		
		PG		
50	980 30	7		
50	980 31	9		
50	980 32	11		
50	980 33	13		
50	980 34	16		
50	980 35	21		
10	980 36	29		
10	980 37	36		
10	980 38	42		
10	980 39	48		

Grey RAL 7035 stopping plugs

Pack	Cat.Nos	PG
50	980 61	9
50	980 62	11
50	980 63	13
50	980 64	16
50	980 65	21
10	980 66	29

For cable glands - ISO

Locked by direct mounting on IP 55 ISO cable gland in place of the cable gland retaining cap

50	980 61	For Cat.No 979 31
50	980 63	For Cat.No 979 33
50	980 64	For Cat.No 979 34

nickel plated brass cable glands IP 65

ISO and PG



Technical characteristics (p. 298)

Pack	Cat.Nos	Nickel plated brass cable glands		
		Supplied with surface seal and hexagonal nut mounted		
		ISO		
		Conform to EN 50 262		
			Clamping capacity (mm)	
		ISO	Min.	Max.
20	955 70	16	4	9.5
20	955 71	20	4	15
10	955 72	25	6	14
5	955 73	32	9	20
		PG		
		Conform to guide recommendation UTE C 68-300 and 68-312		
		PG	Clamping capacity (mm)	
			Min.	Max.
20	955 50	9	2	9
20	955 51	11	4	11
20	955 52	13	4.5	12
20	955 53	16	5.5	14.5
10	955 54	21	8	19
10	955 55	29	12	27

Pack	Cat.Nos	Stopping plugs	
		Supplied with surface seal and hexagonal nut mounted Tightening with flat screwdriver Nickel plated brass	
		ISO	
20	955 75	16	
20	955 76	20	
10	955 77	25	
10	955 78	32	
		PG	
20	957 04	9	
20	957 05	11	
20	957 06	13	
20	957 33	16	

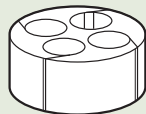
multi-entry plastic cable glands IP 66

Multi-entry cable plastic glands and seals

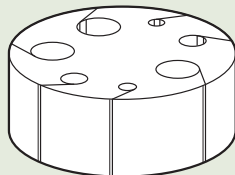
3 inputs
Cat.Nos 980 55/56



4 inputs
Cat.Nos 980 57/58



7 inputs
Cat.No 980 60



ASI seal
Cat.No 980 54



Cat.Nos	Threading	internal Ø for cables (mm)
980 03/23	ISO 20 - PG 13.5	12.5
980 05/25/49	ISO 25 - PG 21	18.5
980 06/26/50	ISO 32 - PG 29	25.5
980 07/27/51	ISO 40 - PG 36	32.5
980 09/29	ISO 63 - PG 48	44.5

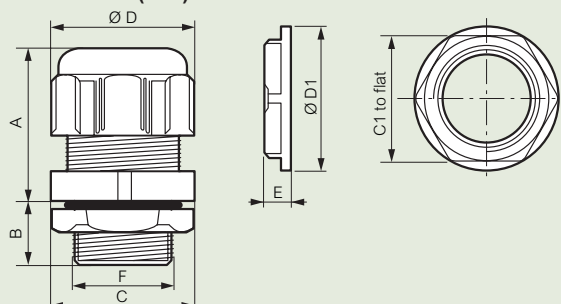
plastic cable glands IP 68

Grey RAL 7001 cable glands

Characteristics

Halogen-free polyamide UL 94-V2
Operating temperature: - 20 °C to + 80 °C
Self-extinguishing 960°C according to IEC 60695-2-11

Dimensions (mm)



ISO

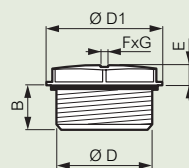
Cat.Nos	Threading	A	B	Ø D	C (to flat)	F	Drilling Ø	C1	E	Ø D1
980 00	ISO 12	22	10	16.8	15	11.9	12.7	19	5	21
980 01	ISO 16	26	10	21	19	15.9	16.2	22	5	24
980 03	ISO 20	29	12	26.5	24	19.8	20.4	26	6	28
980 05/49	ISO 25	35	15	36	33	24.8	25.4	32	6	35
980 06/50	ISO 32	40	15	46.5	42	31.6	32.5	42	7	43
980 07/51	ISO 40	49	17	58.5	53	39.9	40.5	50	7	56
980 08	ISO 50	54	17	66.5	60	50	50.8	60	8	66
980 09	ISO 63	54	18	75	68	62.9	64	75	8	82

PG

Cat.Nos	Threading	A	B	Ø D	C (to flat)	F	Drilling Ø	C1	E	Ø D1
980 20	PG 7	22	10	16.8	15	12.5	12.7	19	5	21
980 21	PG 9	26	10	21	19	15.2	15.2	22	5	24
980 22	PG 11	27	12	24.5	22	18.6	18.6	24	5	26
980 23	PG 13.5	29	12	26.5	24	20.4	20.4	26	6	28
980 24	PG 16	30	13	29.5	27	22.5	22.5	32	6	35
980 25	PG 21	35	15	36	33	28.3	28.3	36	7	38
980 26	PG 29	40	15	46.5	42	37	37	46	7	51
980 27	PG 36	49	17	58.5	53	47	47	60	8	66
980 28	PG 42	54	17	66.5	60	54	54	70	8	78
980 29	PG 48	54	18	75	68	60	60	75	8	82

Grey RAL 7001 stopping plugs

Dimensions (mm)

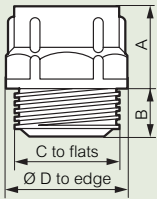


Cat.Nos ISO	Threading	Ø D	D1	F X G	B	E
980 41	ISO 16	15.8	20.5	8 x 2	12	3.9
980 43	ISO 20	19.8	25	8 x 2	12	3.8
980 45	ISO 25	24.8	30.5	8 x 2	12	4.4
980 46	ISO 32	31.8	38	8 x 2	12	4.9
980 47	ISO 40	39.8	46.5	8 x 2	12.5	4.9

plastic cable glands IP 55

■ RAL 7035 cable glands

Dimensions (mm)



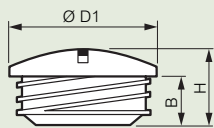
Cat.Nos	Threading ISO	Body (mm)					Ø Drilling smooth hole
		Ø D to edge	C to flat	A	B		
979 31	16	21	19	11.5	7	15.2	
979 33	20	26.5	24	13	9	20.4	
979 34	20	29.75	27	13.5	9	20.4	

PG

Cat.Nos	Threading PG	Body (mm)					Ø Drilling smooth hole
		Ø D to edge	C to flat	A	B		
980 10	7	16.6	15	11	6.5	12.7	
980 11	9	21	19	11.5	7	15.2	
980 12	11	24	22	12	8	18.6	
980 13	13	26.5	24	13	9	20.4	
980 14	16	29.75	27	13.5	9	22.5	
980 15	21	35.25	32	16.5	10	28.3	
980 16	29	45	41	18.5	12	37	
980 17	36	60	55	21.5	14	47	
980 18	42	65.5	60	22	16	54	
980 19	48	71	65	23	16	60	

■ RAL 7035 stopping plugs

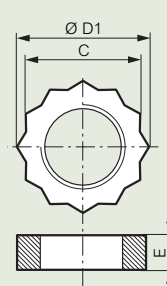
Dimensions (mm)



Cat.Nos	Threading	Ø D1 (mm)	B (mm)	H (mm)
980 61	PG 9	19	6.5	-
980 62	PG 11	22	6.5	10
980 63	PG 13	25.5	6.5	10
980 64	PG 16	27	6.5	10
980 65	PG 21	34	8	11.5
980 66	PG 29	44	8	12

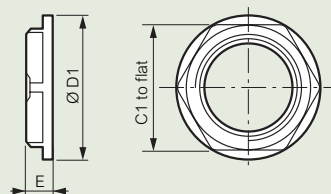
■ Locking nuts

Dimensions (mm) RAL 7035



Cat.Nos	Threading	C to flat	E (mm)	Ø D1 (mm)
980 30	PG 7	15	4.5	17.3
980 31	PG 9	19	4.5	21.9
980 32	PG 11	22	5	25.4
980 33	PG 13	24	5.5	27.7
980 34	PG 16	27	6	31.1
980 35	PG 21	32	6.5	36.9
980 36	PG 29	41	7.5	47.3
980 37	PG 36	54	8.5	62.4
980 38	PG 42	60	9	69.3
980 39	PG 48	67	9.5	77.4

Dimensions (mm) RAL 9011



ISO

Cat.Nos	Threading	C1 to flat	E	Ø D1
979 41	ISO 16	22	5	24
979 43	ISO 20	26	6	28

nickel plated brass cable glands IP 65

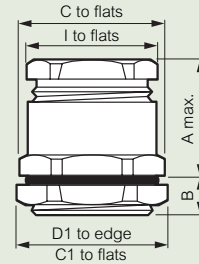
■ Characteristics

Operating temperature: - 15 °C to + 60 °C

Cable gland and plug material : nickel-plated brass CuZn 40 Pb
3 zinc-plated steel grain

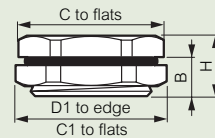
Natural rubber peelable ring Shore 60 for adapting to exact diameter of cable used

■ Dimensions (mm)



Cat.Nos	Threading	Height				B	A max.	Ø Drilling smooth hole
		I to flat	C to flat	C1 to flat	D1 to flat			
ISO								
955 70	16	15	17	20	22.2	7	25	16.5
955 71	20	18	20	24	26.7	7	25	20.5
955 72	25	22	26	30	33.5	8	29	25.5
955 73	32	28	32	35	38.5	8.5	32	32.5
PG								
955 50	09	15	17	19	21.1	6	17.5	15.2
955 51	11	18	20	21	23.5	6	17.5	18.6
955 52	13	20	22	23	25.5	6.5	18.5	20.4
955 53	16	22	24	26	29	6.5	20.5	22.5
955 54	21	28	30	32	35.5	7	23	28.3
955 55	29	37	40	41	45	8	25	37

Stopping plugs



Cat.Nos	Threading	C	C1	D1	B	H
ISO						
955 75	16	17	20	22.2	7	10
955 76	20	23	24	26.7	7	10
955 77	25	29	30	33.5	8	11.5
955 78	32	29	35	38.5	8.5	12.5
PG						
957 04	09	17	19	21.1	6	9
957 05	11	19	21	23.5	6	9
957 06	13	21	23	25.5	6.5	9.5
957 33	16	23	26	29	6.5	9.5