

Salvena™ fire alarm system

The Salvena fire alarm system protects people and property in commercial and industrial buildings

Example of installation

PRODUCTS

- SALVENA FIRE ALARM PANELS**
 - 1, 2, 4, or 8 detection zones to confine fire
 - Display of the detection zone by LED
 - Front programming and programme reading
 - Can be combined with a repeater panel for remote display of information
 - Programmable contacts to order safety systems (fire doors for example)

(see p.898)
- SAFETY ELECTRICAL POWER SUPPLY**
 - Supplies power to the electromagnetic door holders

(see p.899)
- FLASHING-LIGHTS**
 - Can be added to sounders for better warning
 - Can also be used to indicate the location of the fire

(see p.899)
- SOUNDERS**
 - To inform people that they have to evacuate the building
 - Must be distributed in the whole building so that sound can be heard from each place

(see p.899)
- ELECTROMAGNETIC DOOR HOLDERS**
 - Closes automatically fire doors by current breaking

(see p.899)

PRODUCTS (CONTINUED)

- AUTOMATIC DETECTORS**
2 types:
 - > **Optical smoke detector**
 - for rapid detection of the start of a fire before flames appear
 - average detection area: 60m²
 - > **Heat detector**
 - detects the speed of temperature rise with a threshold of + 60°C
 - average detection area: 30m²

Supplied with base and protective cover
Note: automatic detectors can be combined with lighting indicator for remote detection indication at a location outside the room

(see p.899)
- MANUAL CALL POINTS**
Used to trigger an alarm by pressing the membrane on the unit. Deformation of the membrane indicates that the call point has been activated. Resettable on the front panel, using a special key supplied with the product
2 types of manual call points:
 - > For fire alarms
 - fitted with a NC/NO contact
 - red RAL 3000 call points
 - conforms to standard EN 54-11
 - > For emergency exits:
 - fitted with a NC/NO contact
 - green call point

(see p.899)
- REPEATER PANELS**
 - Remote indication of all the information provided by Salvena fire alarm panels
 - Max. 3 repeaters per central panels

(see p.898)

Consult the E-Catalogue: instructions, technical data sheets, etc.

fire alarm panels

Salvena™



6430 20



6430 22



6430 23



6430 65

System description (p. 901)

Certified to European standards EN 54-2, EN 54-4. Mains voltage: 230 V AC + 10 % - 15 % - 50/60 Hz
 Operating temperature - 10 °C to + 55 °C. Front programming and program reading. Maximum 32 points per zone: 32 manual call points only or 32 automatic detectors only. Front marking to indicate the zones. 2 customizable codes for access to 2 function levels (end-users and installers)
 For 2, 4 and 8 zone panels
 - 2 sounders (or flash) outputs
 - Time delay of sounder output N° 2 adjustable from 0 to 10 minutes
 - Operation on day / night mode
 - Programming of detection zones with sounder output N° 2
 - Option of connecting up to 3 repeater panels, English / Spanish labels

Pack	Cat.Nos	1-zone Salvena panel
1	English Spanish 6430 20	1 detection loops 1 sounder (or flash) output 210 mA 1 general fire volt free changeover contact (1 A 24 V...) 1 general fault volt free changeover contact (1 A 24 V...) Autonomy: 72 hours in standby + 30 minutes in alarm Battery not supplied (Cat.No 407 49) IP 33 - IK 07

Pack	Cat.Nos	2-zone Salvena panel
1	English Spanish 6430 21	2 detection loops 2 sounders (or flash) outputs 450 mA (total) 1 general fire volt-free changeover contact (1 A 24 V...) 1 general fault volt-free changeover contact (1 A 24 V...) Autonomy: 72 hours in standby + 30 minutes in alarm Battery not supplied (Cat.No 407 49) IP 33 - IK 07

Pack	Cat.Nos	Lead batteries
1	407 49	12 V - 7 Ah
1	407 53	12 V - 12 Ah

Pack	Cat.Nos	4-zone Salvena panel
1	English Spanish 6430 22	4 detection loops 2 sounders (or flash) outputs 750 mA (total) 1 general fire volt-free changeover contact (1 A 24 V...) 1 general fault volt-free changeover contact (1 A 24 V...) 1 auxiliary changeover contact 24 V - 1 A Programming of auxiliary contact with detection zones 1 input for service signal Battery not supplied (Cat.No 407 53) Autonomy: 72 hours in standby + 30 minutes in alarm IP 30 - IK 07

Pack	Cat.Nos	8-zone Salvena panel
1	English Spanish 6430 23	8 detection loops 2 sounders (or flash) outputs 1.2 A 1 general fire volt free changeover contact (1 A 24 V...) 1 general fault volt free changeover contact (1 A 24 V...) 4 auxiliary changeover contact 24 V - 1 A Programming of auxiliary contacts with detection zones 1 continuous or resettable output 24 V - 200 mA 1 input for service signal (class change) Autonomy: 72 hours in standby + 30 minutes in alarm Battery not supplied (Cat.No 407 53) Option of remote control for day / night mode IP 30 - IK 07

Pack	Cat.Nos	Repeater panel
1	6430 65	Report of information supplied by the panel (fire, fault, out-of-order, test) on liquid crystal display Max. 3 repeaters per central unit

automatic detectors and manual call points



6430 71



6430 72



380 69



380 23

Pack	Cat.Nos	Automatic detectors for fire alarm panels
1	6430 71	Supplied with base Heat detector Detects temperature rise with threshold of 60 °C, average detection area: 30 m ² (replaces Cat.No 6430 73)
1	6430 72	Optical smoke detector For rapid detection of fire starting before flames appear Average detection area: 60 m ² (replaces Cat.No 6430 74)
1	406 58	Remote light indicator For connection of detectors when they are installed out of site Flush-mounting fixing with Mosaic support Cat.No 748 02 (p. 640), plate Cat.No 750 02 Surface-mounting fixing with Mosaic support Cat.No 748 02 (p. 640), plate Cat.No 750 02 (p. 640) and frame Cat.No 893 14/20 (p. 641)

Pack	Cat.Nos	Manual call points
1	380 69	IP 40 - IK 07 Dimensions: - Surface-mounting: 90 x 90 x 57 mm - Flush-mounting: 90 x 90 x 27 mm - Call by pressing the center of the membrane (pressure 2.5 kg) with clear display of the call position - Reset on front of device, with special key (supplied with the product) - Space reserved to stick a function using identification label For fire alarm equipment Conform to EN 54-11 standard Equipped with NO/NC contact - 0.1 A - 48 V _~ Red - Resettable For emergency exit Equipped with NO/NC contact - 5 A - 24 V _~ / 1 A - 48 V _~ Green - Resettable
	380 70	
1	380 23	

sounders, flashing light, electromagnetic door holder and safety electrical power supply



415 08



414 62



406 86



614 79

Pack	Cat.Nos	Sounders
		To be power supplied by fire alarm panel, power box or filtered stabilised DC power supply optional continuous sound. Service signal option
		IP 31 - IK 07 Sound output at 2 m: 90 dB Surface-mounting. Dim.: 143 x 121 x 62 mm Operating voltage range: 12-24-48 V ± 10 % Average consumption: 12 V _~ : 20 mA, 24 V _~ : 25 mA, 48 V _~ : 35 mA
1	415 08	White
1	415 06	Red
1	415 05	IP 65 - IK 07 Sounder with red flashing light Sound output at 1 m: 92 dB Surface-mounting Average consumption: 24 V _~ : 62 mA
1	415 14	IP 44 - IK 09 Sound output at 2 m: 105 dB Surface-mounting Average consumption: 24 V _~ : 175 mA
	Red RAL 3000	IP 44 - IK 10 Sound output at 1 m: 90 dB Surface mounting Average consumption: 24 V _~ : 70 mA
1	414 62	

Pack	Cat.Nos	Flashing light
1	Red 6430 80	IP 54 Average consumption: 24 V _~ : 80 mA

Pack	Cat.Nos	Electromagnetic door holder
1	406 86	Automatically closes fire doors by current breaking Fitted with: Black metal connection box with electromagnetic element and local push-button Wall surface-mounting Metal washer hinged for door fixing Power supply: 24 V _~ Consumption: 25 mA Power: 0.6 W

Pack	Cat.Nos	Safety electrical power supply
1	614 79	For DC power supply of fire safety installations such as fire doors, smoke removal devices, sprinklers, sounders Power supply when mains on or off Fitted with sealed Ni-Cd batteries Power supply 230 V _~ - 50/60 Hz The power is given for 1 hour operating range Voltage: 27 V _~ 5 W

Red catalogue numbers: New products.

safety boxes



380 09



380 11



380 24



380 54

Pack	Cat.Nos	Break glass emergency boxes
		Polycarbonate, Class II - Red - IK 07 - 4.5 A 400 V~ • Equipped with: - hinged glass door with locking option by key (Cat.No 013 90) - 3 cable entries for CG ISO 16/20 (by top or bottom as reversible product) - 2 entries from back of product Ø20 - 2 side entries for mini-trunking 20 x 12.5 and 32 x 12.5 - 1 NC contact and 1 NO contact • Flush-mounting option with boxes Ø85, (p. 588) • Dim: 125 x 125 x 71 mm
1	380 09	Mushroom head button box • Equipment: - 1 mushroom head button with latching, unlocking by key No 850 - 2 long life 230 V~ LED indicators (green/red)
1	380 11	2-position box • Equipment: - 1 mushroom head button for pressing - 1 finishing accessory for simple action release (glass break) or double action (glass break followed by pressing on mushroom head)
1	380 24	Equipped with 2 ready-to-connect long life 230 V~ LED indicators (green/red)

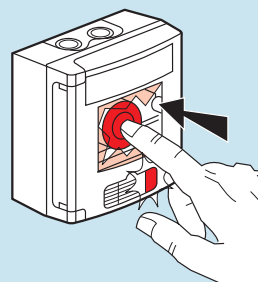
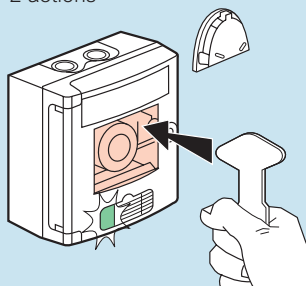
Pack	Cat.Nos	Red key space box
1	380 54	Polycarbonate Class II IP 44 - IK 07 Equipped with: - hinged glass door with locking option by key No 850 - 1 contact 100 mA, 48 V signalling glass break by technical alarm return Dim: 125 x 125 x 45 mm

safety boxes

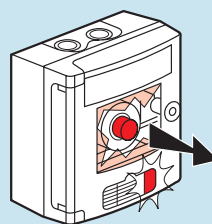
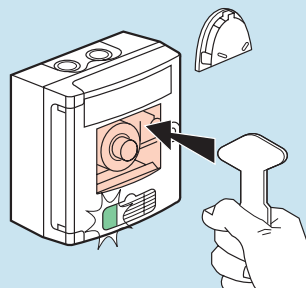
■ Break glass emergency boxes

2-position function operation

2 actions



1 action





For total adaptability to users' requirements



- > Easy to choose
- > Easy to install
- > Easy to use

Designed for:

- > Commercial buildings
- > Office solutions
- > Storage rooms
- > Meeting rooms



767 10

Pack	Cat.Nos	Easy to use readers
1	767 01	5 vertical modules Mosaic mechanisms equipped with 2 LEDs and 1 buzzer To be associated with mounting boxes Cat.Nos 767 14 or 767 15 Can be used in stand-alone mode or with control panel (Cat.No 767 04 or other control panel using Wiegand protocole) IP 40 - IK 04 Keyboard reader - 12 V d.c - 400 mA 99 users in stand-alone mode and up to 10000 users with the Legrand control panel Cat.No 767 04 1 door volt-free changeover contact (1 A - 12 V) adjustable from 1 sec to 255 sec 1 push-button volt-free contact Built-in Wiegand protocol interface Permanent backup memory
1	767 02	Card reader - 12 V d.c - 400 mA 500 users in stand-alone mode and up to 10000 users with the Legrand control panel Cat.No 767 04 1 door volt-free changeover contact (1 A - 12 V) adjustable from 1 sec to 255 sec 1 push-button volt-free contact Built-in Wiegand protocol interface Permanent backup memory Supplied with a master card, used to enrol a user or to communicate between the reader and the encoder Cat.No 767 05 in stand-alone mode
1	767 03	Fingerprint reader - 12 V d.c - 400 mA 999 users in stand-alone mode and also with the Legrand control panel Cat.No 767 04 1 door volt-free changeover contact (1 A - 12 V) adjustable from 1 sec to 255 sec 1 push-button volt-free contact Permanent backup memory Built-in back-lighted LCD for clear instruction display
Badges for card reader		
1	767 10	Contactless Keyfob badge 13.56 Mhz (possibility to personalize)
1	767 11	ISO contactless card Dim.: 50 x 80 mm
Mounting boxes + supports + cover plates		
1	767 14	For 5 vertical modules Flush box + support frame + cover plate
1	767 15	Surface box + support frame + cover plate

NEW

access control: Mosaic readers and manager (continued)

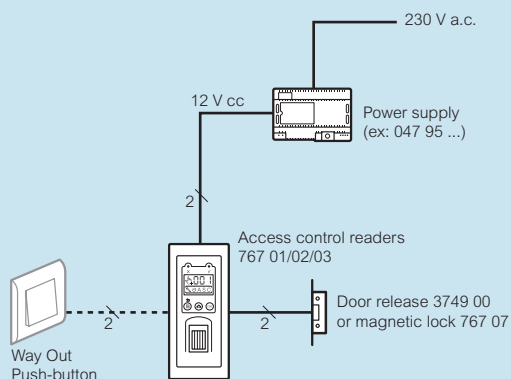


767 04

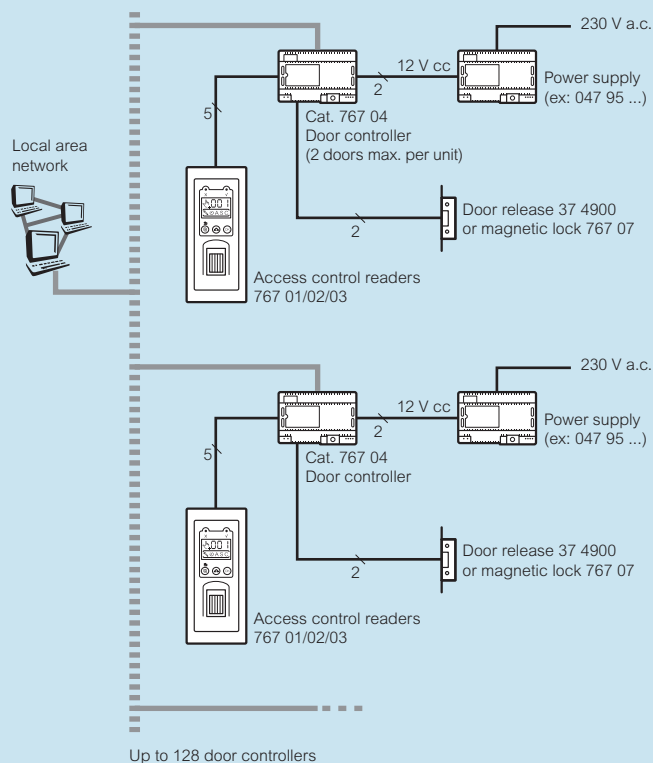
Pack	Cat.Nos	Door controller
1	767 04	<p>To be connected with Legrand readers or any reader using Wiegand protocol (1 bit up to 128 bits) or ABA (clock and data)</p> <p>Built-in software to be used when only 1 door controller is connected</p> <p>If more than 1 door controller, the Cat.No 767 06 must be added</p> <p>Time office plurality per badge and zone</p> <ul style="list-style-type: none"> • activation, desactivation of the badges • selection of access and/or group of accesses • management of 32 slots (in timetable) • event log: 10 000 events • up to 10 000 users <p>2 readers maximum</p> <p>2 doors volt-free changeover contact (1 A - 12 V)</p> <p>2 push-button volt-free contact</p> <p>2 door-status entry</p> <p>Anti-passback function</p> <p>Built-in IP interface: to connect up to 128 Legrand door controllers and a PC through the LAN</p>
<p>Management accessories</p>		
1	767 05	<p>USB encoder for PC - intermediate level of management for card reader in stand-alone mode</p> <p>Allows to easily encode a large number of badges through the master badge of the reader</p>
1	767 06	<p>Multi-access management software</p> <p>To supervise an installation of more than 2 door controllers:</p> <ul style="list-style-type: none"> • display of the actual status of each controlled access • direct display of readers status, badge controlled • memory of events • allows to supervise up to 128 controllers
1	767 07	<p>Electromagnetic lock</p> <p>Locking force: 300 kg</p> <p>12 V power supply, 500 mA consumption</p> <p>Delivered with surface-mounting fixing accessories</p>
1	3749 00	<p>Electric door release</p> <p>Reversible left/right side</p> <p>12 V~/∞ power supply, 300 mA</p>
1	047 95	<p>Power supply</p> <p>Output 12 V∞ 1.3 A</p>
1	047 92	<p>Power supply</p> <p>Output 12 V∞ 2.5 A</p>

access control: Mosaic readers and manager

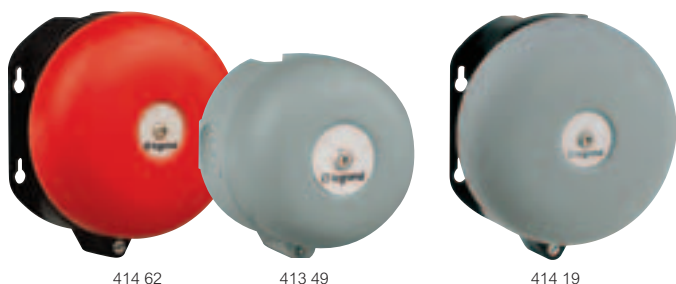
■ Stand-alone



■ Centralised



bells for industrial and alarm use



414 62

413 49

414 19

Pack	Cat.Nos	Class I			
		Double insulated Polyester corrosion resistant finish 200 hours maxi. continuous rating			
		IP 44 - IK 10 - Direct current version Ø150 mm gong			
		Voltage ⋮	Average Consumption (mA)	Average acoustic output at 1 m (dB)	Weight (kg)
1	RAL 3000 Red 414 62	24 V	70	90	1
		IP 40 - IK 08 - 50/60 Hz - Alternating current version Ø100 mm gong			
		Voltage ~	Consumption (mA)	Average acoustic output at 1 m (dB)	Weight (kg)
1	RAL 7037 Grey 413 49	230 V	50	95	0.8
		IP 44 - IK 10 Ø150 mm gong			
		Voltage ~	Consumption (mA)	Average acoustic output at 1 m (dB)	Weight (kg)
1	414 16	24V	360	98	1
1	414 18	110/130 V	90	98	1
1	414 19	230 V	50	98	1
		Ø250 mm gong			
1	414 39	230 V	70	98	2.1

electromechanical sirens



415 23

415 33 with claws

Pack	Cat.Nos	Industrial warning devices 110 dB IP 20 - IK 08					
		Frequency 350/400 Hz, continuous sound, IP 54 with weatherproof box Operates intermittently: 1 min on / 10 min off					
						Consumption in mA	
1	415 20	24 V ~ and ⋮ power supply:				820	
1	415 23	230 V ~ power supply:				120	
		Electromechanical sirens IP 30 - IK 05 Supplied with screws for semi-flush mounting					
		D.C. current					
		Voltage =	Power (W)	Consumption (mA)	Average acoustic output at 1 m (dB)	Weight (kg)	Max. continuous rating (hr)
1	415 32	12 V	11	889	98	0.2	200
1	415 33	24 V	12	516	100	0.2	200
		A.C. current - 50/60 Hz					
1	415 36	24 V	12.5	531	100	0.2	200
1	415 38	110 V	70	400	105	0.35	100
1	415 39	230 V	57	250	105	0.35	100
		Multi-sound electronic sirens					
		97 to 106 dB 16 electronic sounds possible for identification of each defined event Easy to identify and select sounds for each appliance using coded wheel Adjustable sound level					
1	415 45	230 V~, IP 44 - IK 07					

illuminated signalling



413 08



413 14

Pack	Cat.Nos	Rotating lights
1	413 08	Halogen lamp 20 W (supplied) Light intensity: 1 500 Cd (p) Screw-mounting Dim.: height 185 mm, Ø140 mm IP 65 - IK 10 230 V ~, orange Consumption (mA) 300

10	413 62	Halogen lamp BA9 S H 12 V - 20 W: rotating lights Cat.No 413 08
----	--------	--

1	413 57	Flashing light Xenon lamp 2 joules 1 Flash (supplied) Light intensity: 1 050 Cd (p) Screw-mounting Dim.: height 185 mm, Ø140 mm IP 65 - IK 10 230 V ~, red Consumption (mA) 72
---	--------	--

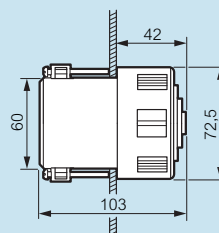
		Blinking or steady lights	Environmental high quality LEDs
		Screw-mounting Dim. height: 85 mm, Ø105 mm Equipped with 16 LEDs Ø5 mm, high brightness, low consumption Light intensity: 55 Cd(p)	
1	413 09	Colour and voltage ()	Consumption (mA)
1	413 13	Orange, 24 V ac/dc	90
1	413 10	Red, 24 V ac/dc	90
1	413 10	Orange, 230 V ac	20
1	413 14	Red, 230 V ac	20

electromechanical sirens

■ Dimensions

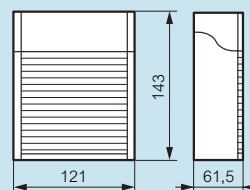
Electromechanical sirens

Cat.Nos 415 32/33/36/38/39



Multi-sound electronic sirens

Cat.No 415 45



■ Selection chart of sounds (Cat.No 415 45)

Type of signal	Example of application	Position of code	Sound level (in dB at 1m)		Frequency in Hz	Consumption in mA
			max.	min.		
Danger	Moving equipment or vehicle	0	98	68	2 400 to 2 800	70
		1	102	73	1 000 to 1 500	45
	Interruption of a dangerous manufacturing process	2	98	70	2 400 to 2 800	75
		3	98	70	2 400 to 2 800	50
		4	99	72	2 400 to 2 800	100
Defect	Interruption of a non-dangerous manufacturing process	5	104	75	2 400 to 2 800	100
		6	102	70	1 000 to 1 500	30
		7	97	68	1 000 to 1 500	30
		8	101	73	1 000 to 1 500	50
		9	101	73	1 000 to 1 500	50
Miscellaneous	Access to a school, a work shop	A	102	74	1 000 to 1 500	30
		B	99	70	554	20
Evacuation	Fire	C	102	74	3 000	100
Intrusion	Inside alarm	D	98	69	440 to 554	20
		E	106	81	3 200 / 3 700	130
	Outside alarm	F	104	77	1 400 / 1 600	50



**World Headquarters and
International Department
87045 LIMOGES CEDEX FRANCE**

☎ : 33 5 55 06 87 87

Fax : 33 5 55 06 74 55